

Like picking the ripest berries, to preserve for the winter . CCP is gathering our ways, to preserve in a plan for our tomorrows.



Goal & Objectives: To honour our community, stating a Sagkeeng Vision. Planning for our tomorrows, To identify values & traditions. To attract community to the process. Create planning for the

Process tools

Engage community to participate in community analysis/S.W.O.T. = identifies community strengths, weaknesses, opportunities, threats.

This process has been endorsed by Sagkeeng Chief & Council. May 18, 2017



What is Comprehensive Community Planning?

We have always been natural planners!

CCP is a holistic course of action, undertaken with community participation.

Comprehensive because it includes key parts of a community: governance, economy, social, land/resources, infrastructure, health, & culture.

Community because it takes the guidance and direction of the people, driven & owned by everyone in the community.



Benefits of CCP for the community

CCP provides an opportunity to explore core values. Promote a practical way of reviving & preserving traditional values.

A plan can empower the community, bring people closer by team-building, improve the way of doing business, highlight strengths by coming together and sharing ideas for the common wellness of everyone.



Ka Kina Ki Di Jamin

Translation: We are all going.



The CCP logo & name resulted from a contest & Elder consultation.

Comprehensive Community Planning

“We are all going”
Reflects the approach of moving forward from the place we are now. It’s focus is on “we” which implies that no one is left behind and that we will use all the procedures, practices and resources to succeed in moving all of us forward. It’s about getting us all there not just a few, it’s not personal.



Ka Kina Ki Di Jamin CCP

Located: Sagkeeng Government Office
 Telephone (204) 367-2287
 Facsimile: 204) 367-4315
 Contacts: Brenda Morrissette/bmorrissette@sagkeeng.ca



Informational Brochure

Ka Kina Ki Di Jamin Community Survey– Sample questions/ something to think about



25–50 years from now . . .

How do you see our community?

What is different, what remains the same?

How do you see our land?

How do you see our people live and interact together?

What activities are people engaged in?

What are the most treasured traditions and principles that we want to preserve and practice into the future?

What do you want our community to be remembered for by generations to come?



CCP Champion



A Champion is a person who takes the reigns in the process, leading the process as much as possible.

Champions are supported by the Planners in the learning process and over time, as determined by comfort they may change roles and shift levels of responsibility. **Champions consist of Elders, youth and adults.**

Champions are recognizable by their enthusiasm and drive in the process. They are natural planners and leaders.

Quick-Start

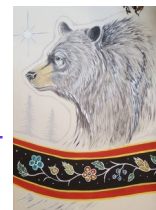
We are visual people and a quick-start shows the community that things can happen when the community works together.

Quick starts are not huge projects but projects that build on positive change in the community.

Want to receive a copy of our monthly Newsletter? Provide us with your email address and we will add you to our contact list.

Facebook: SAGKEENG

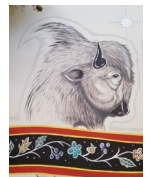
**COMPREHENSIVE
COMMUNITY PLANNING
contact list, receive our monthly newsletter.**



Vision Principles

These are points of a vision:

- Principles that are specific to the community to create positive effects.
- Ideas that reflect what can be acted upon.
- Reaches out to everyone.
- Includes traditions depended upon,
- Draws on the history,
- Leads on how to face the future,
- Identifies and promotes consistency,
- states how we will manage our land & resources,
- celebrates who we are!



Ka Kina Ki Di Jamin

Comprehensive Community
Planning
Box 3
Fort Alexander, MB R0E 0P0

