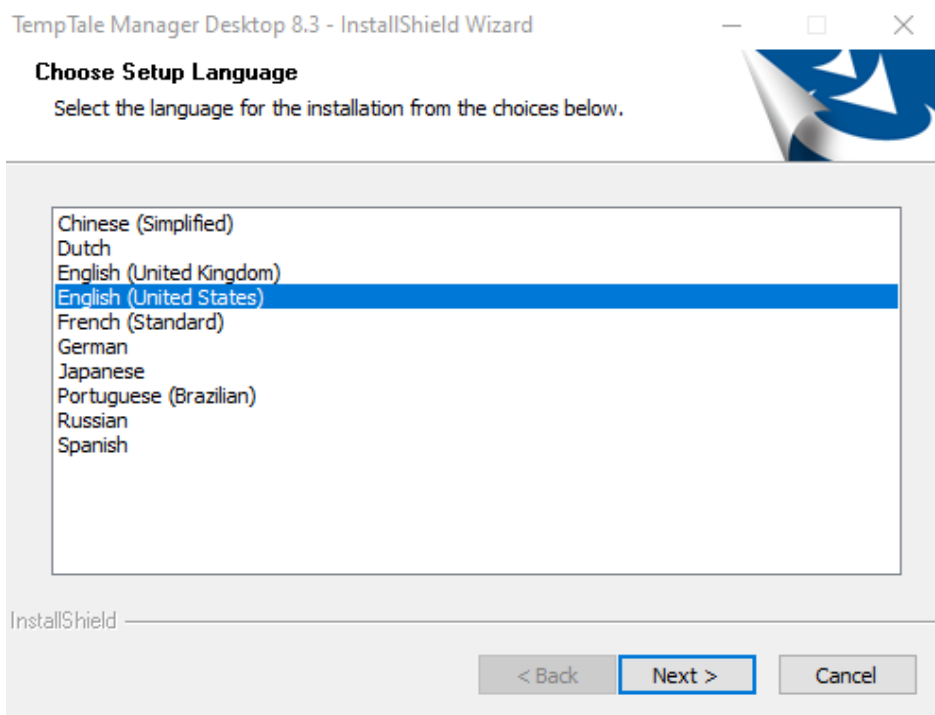
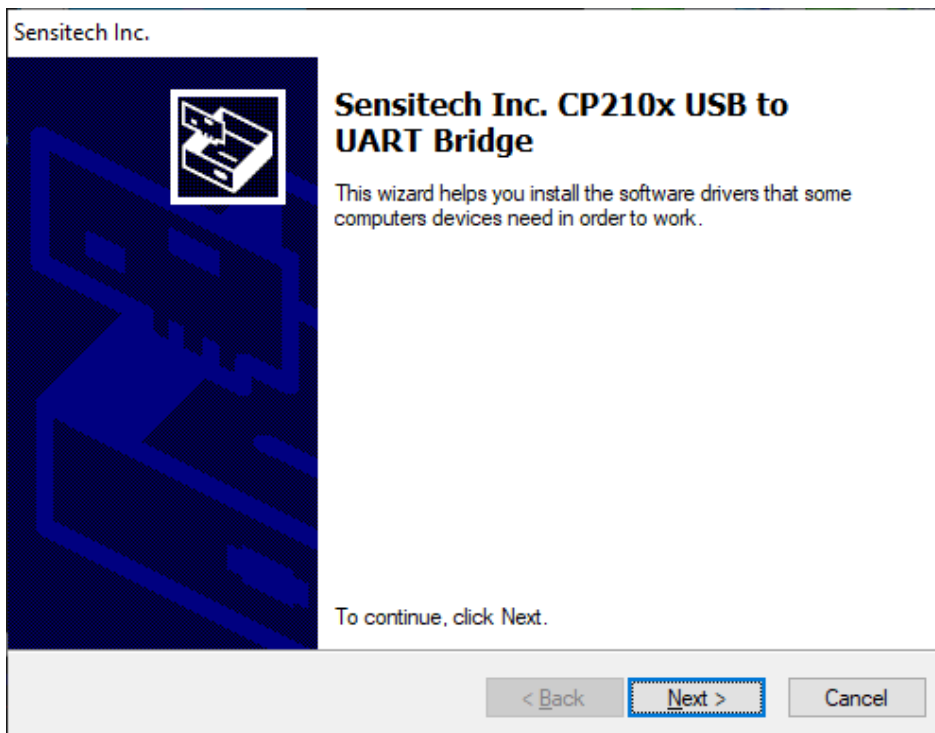


Run setup.exe from [\\sha-n-fs01.skhealth.ca\software\\$\DML\Applications\Sensitech\TTMD\8.3](\\sha-n-fs01.skhealth.ca\software$\DML\Applications\Sensitech\TTMD\8.3)

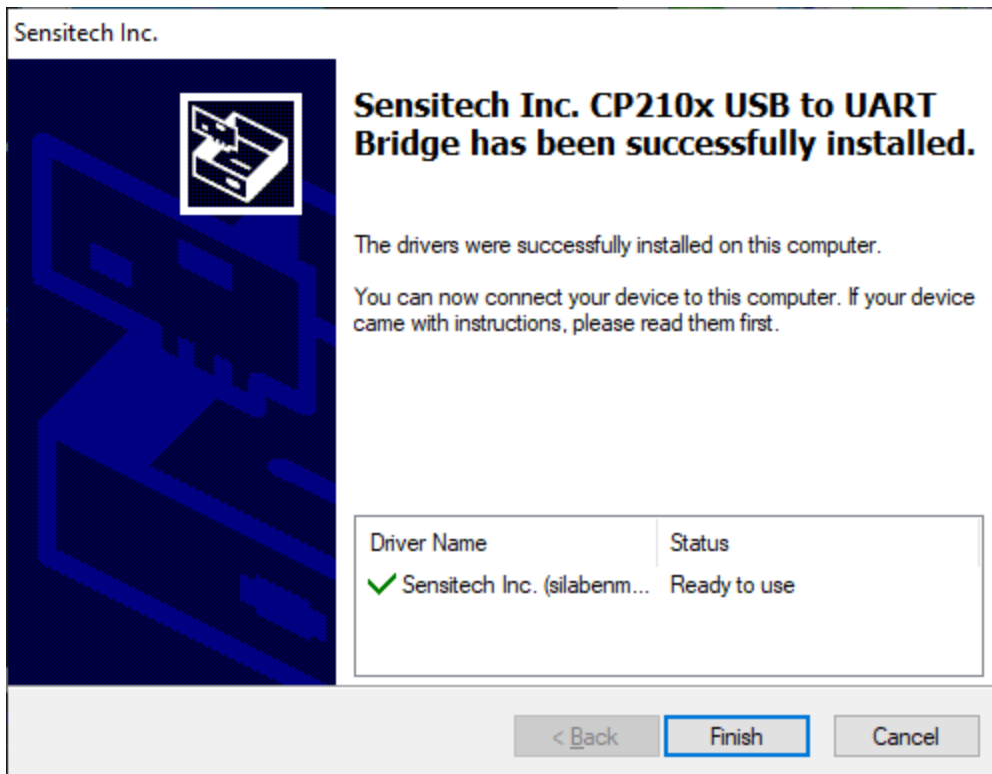
Note – Only 64bit systems are supported.



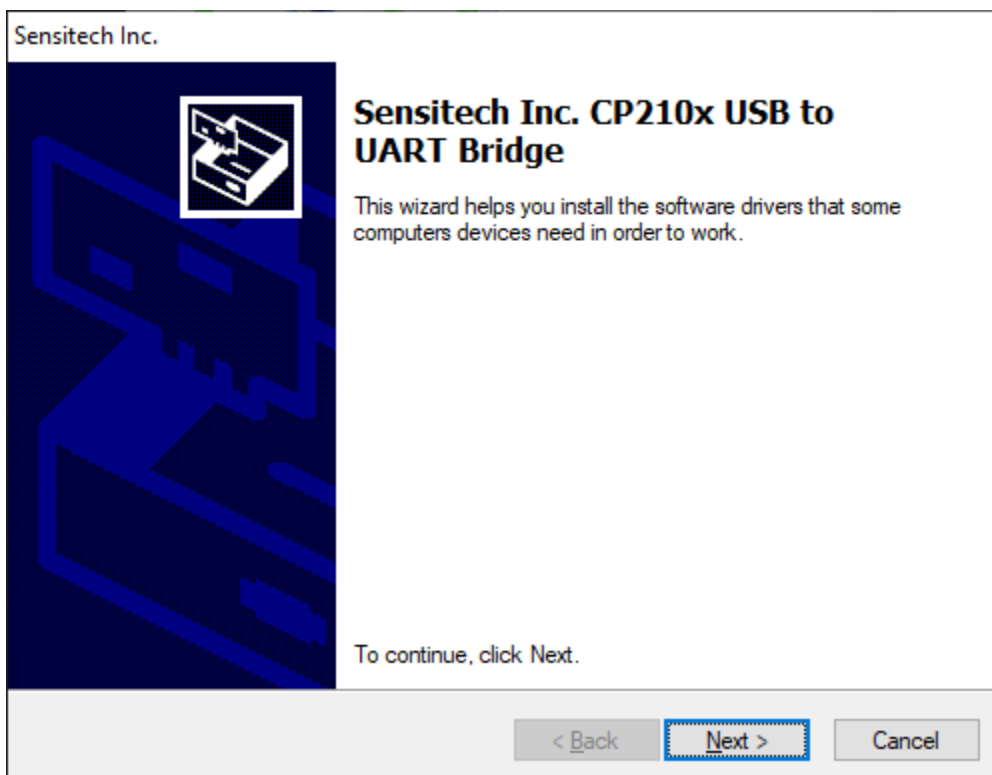
Choose Next



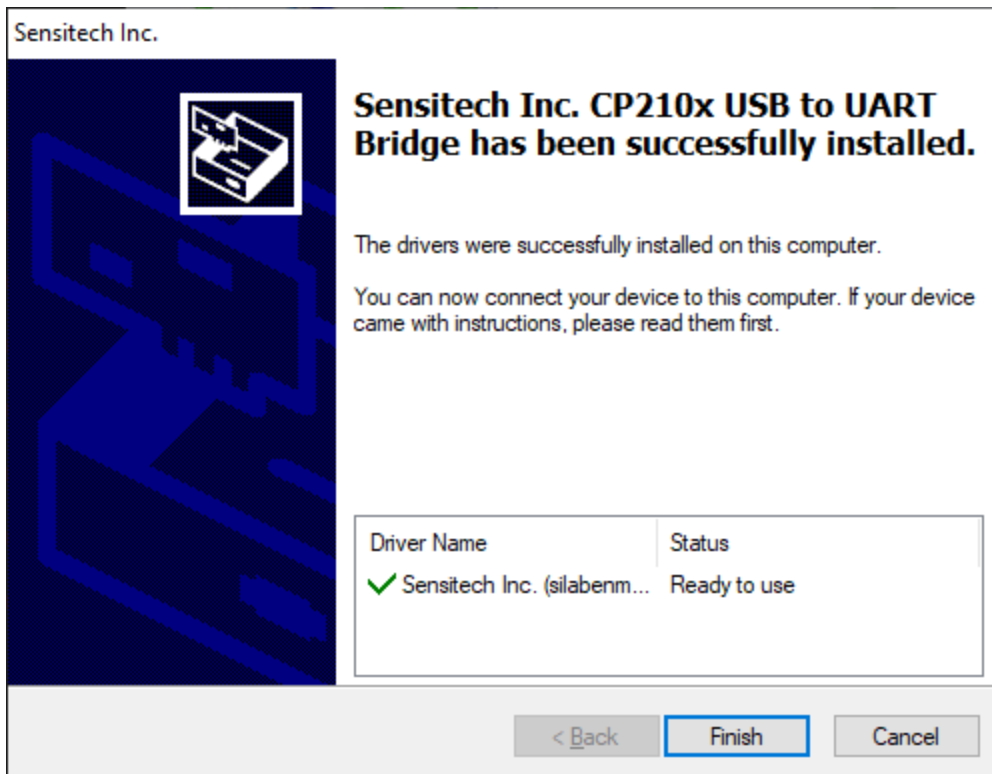
Choose Next



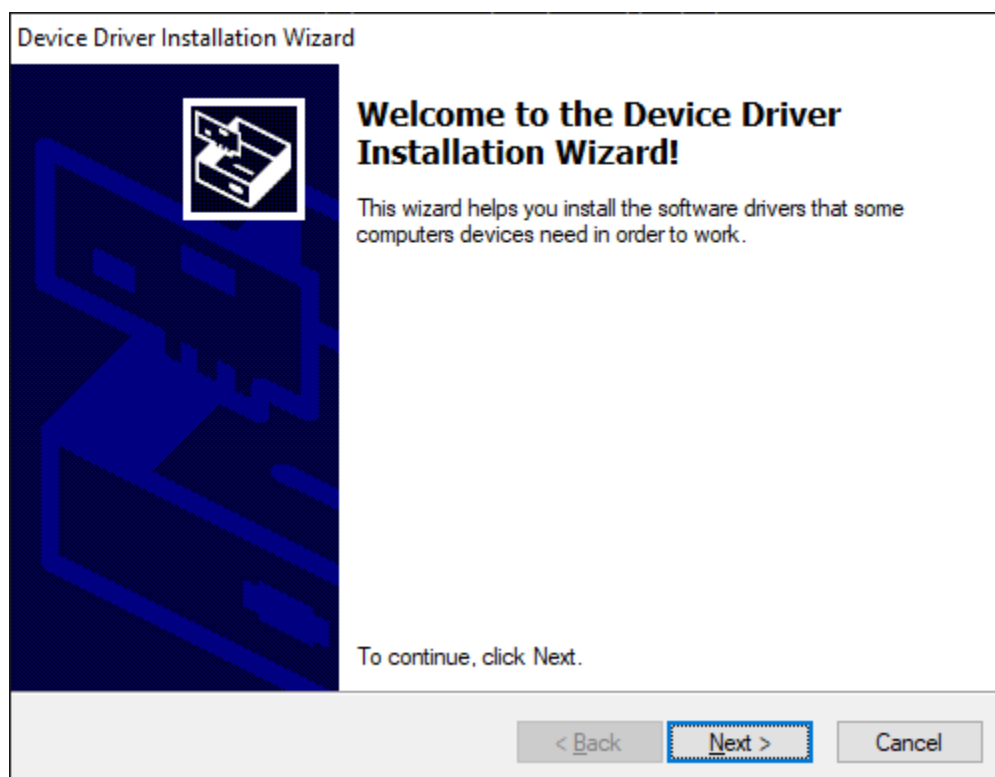
Choose Finish



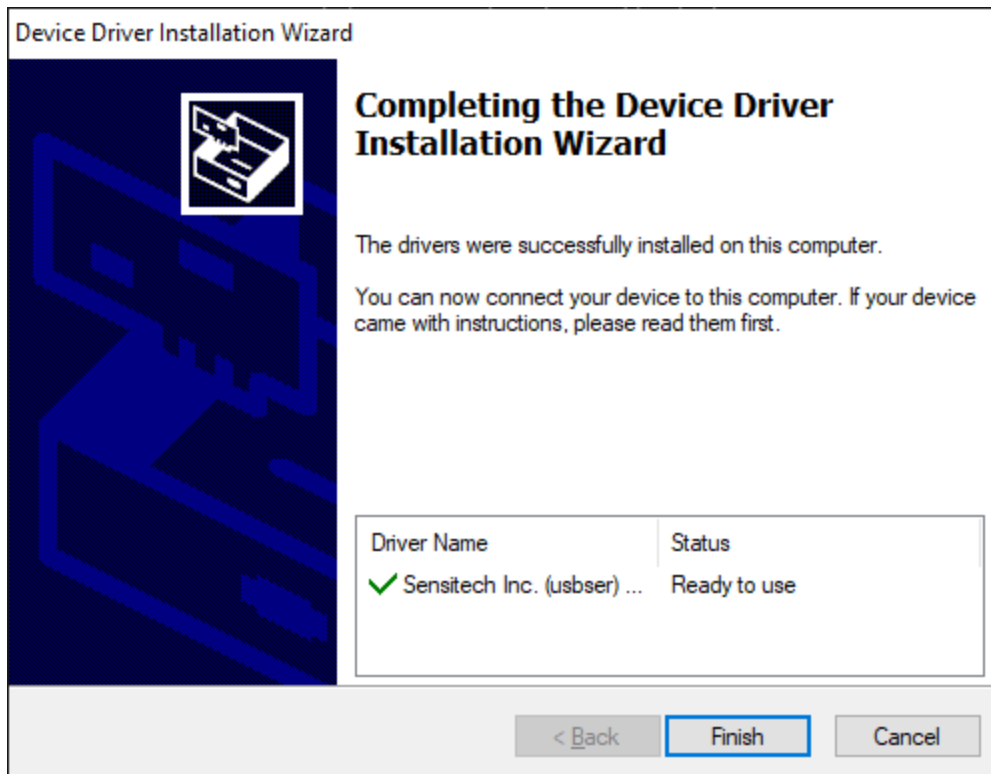
Choose Next



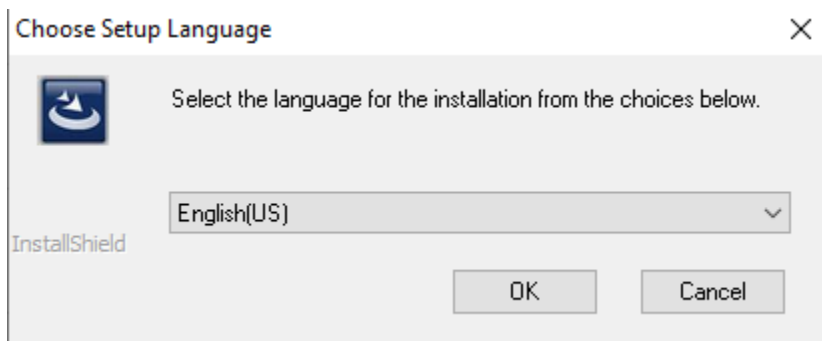
Choose Finish



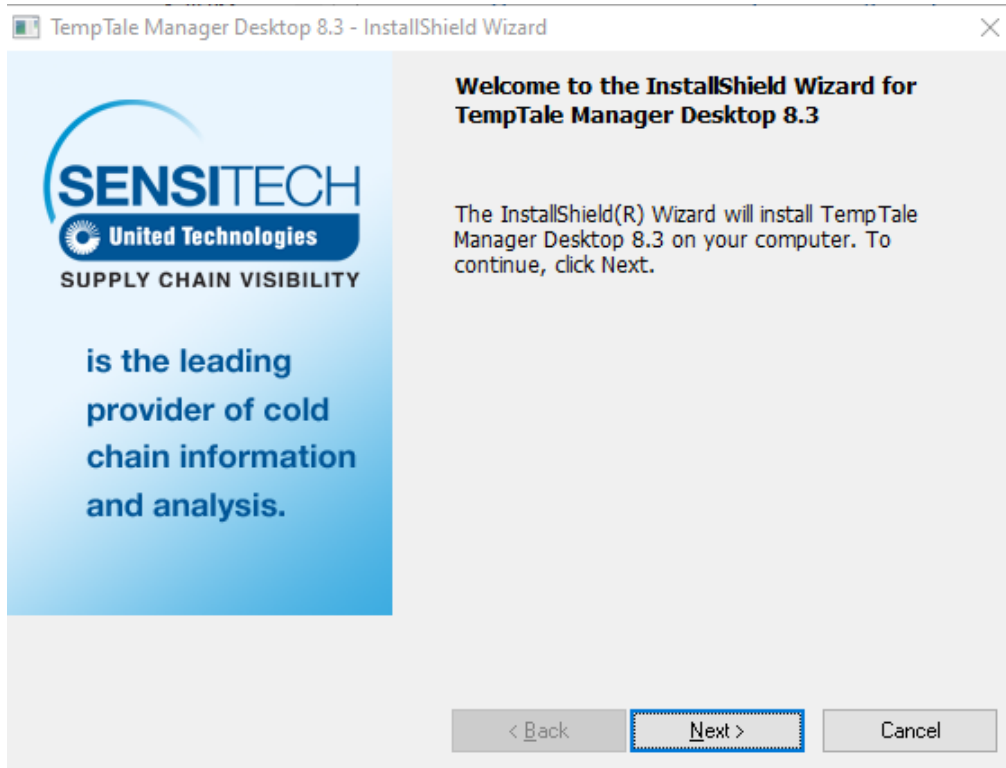
Choose Next



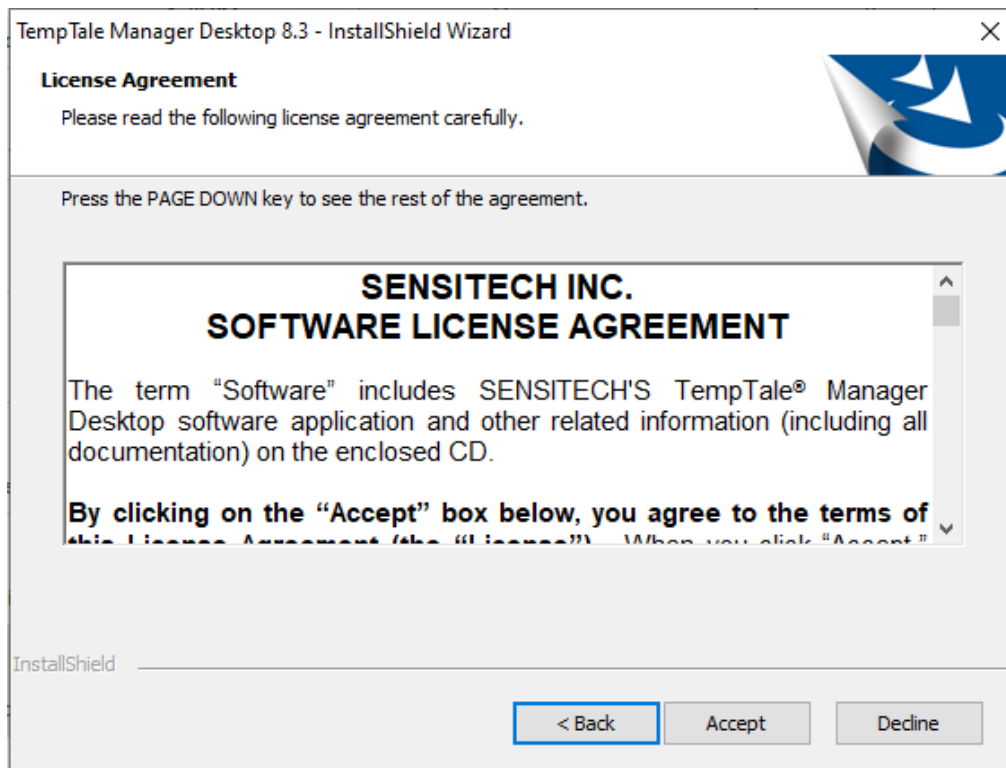
Choose Finish



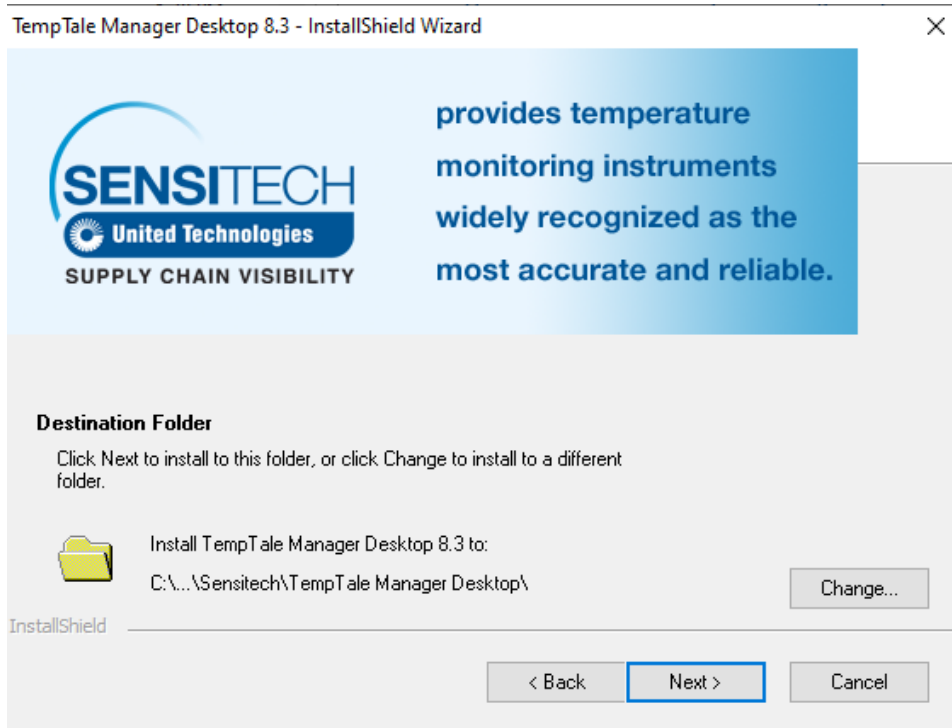
Choose OK



Choose Next



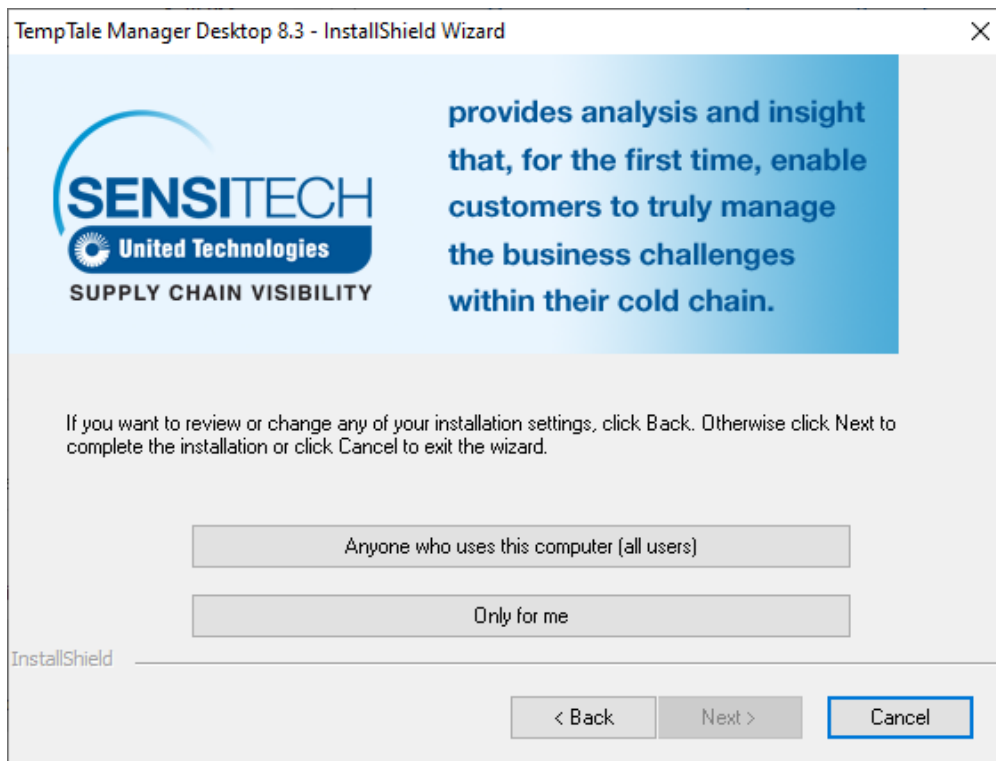
Choose Accept



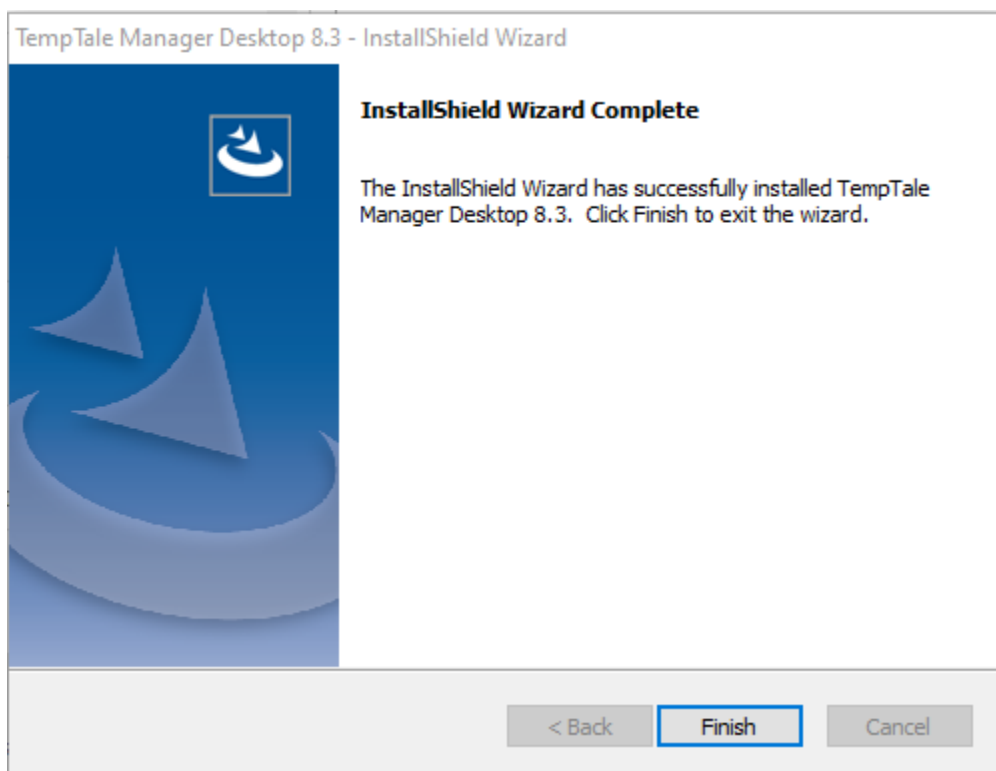
Choose Next



Leave the default selection, disabled, and choose Next



Choose Anyone who uses this computer (all users). Once complete choose Finish.



If the install is failing after an uninstall, rename the {AF9FBB7B-28B3-4984-9FD5-04DB4E302E89} folder located at "C:\Program Files (x86)\InstallShield Installation Information" and try these steps again.